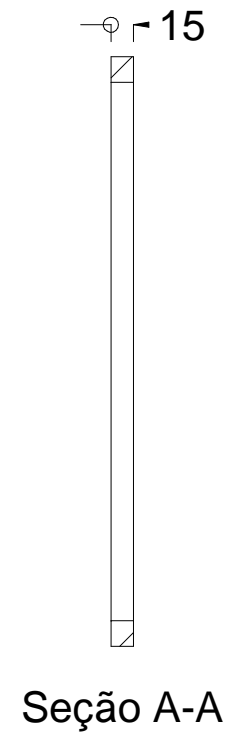
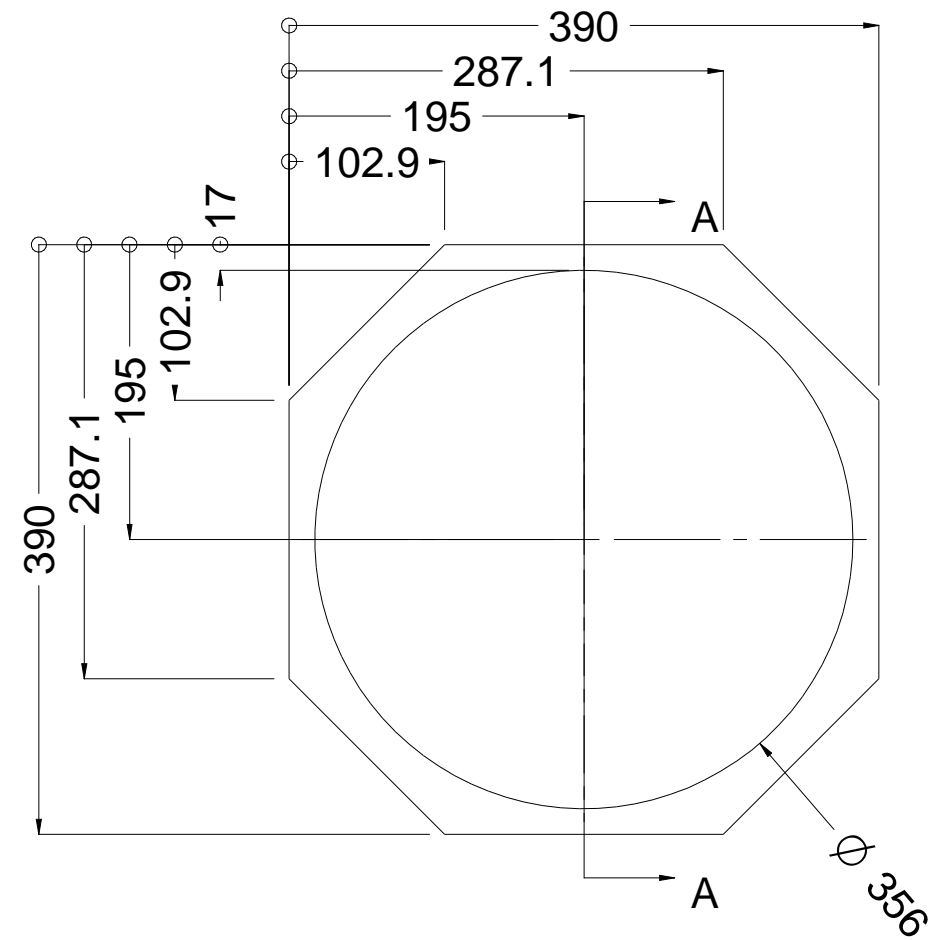
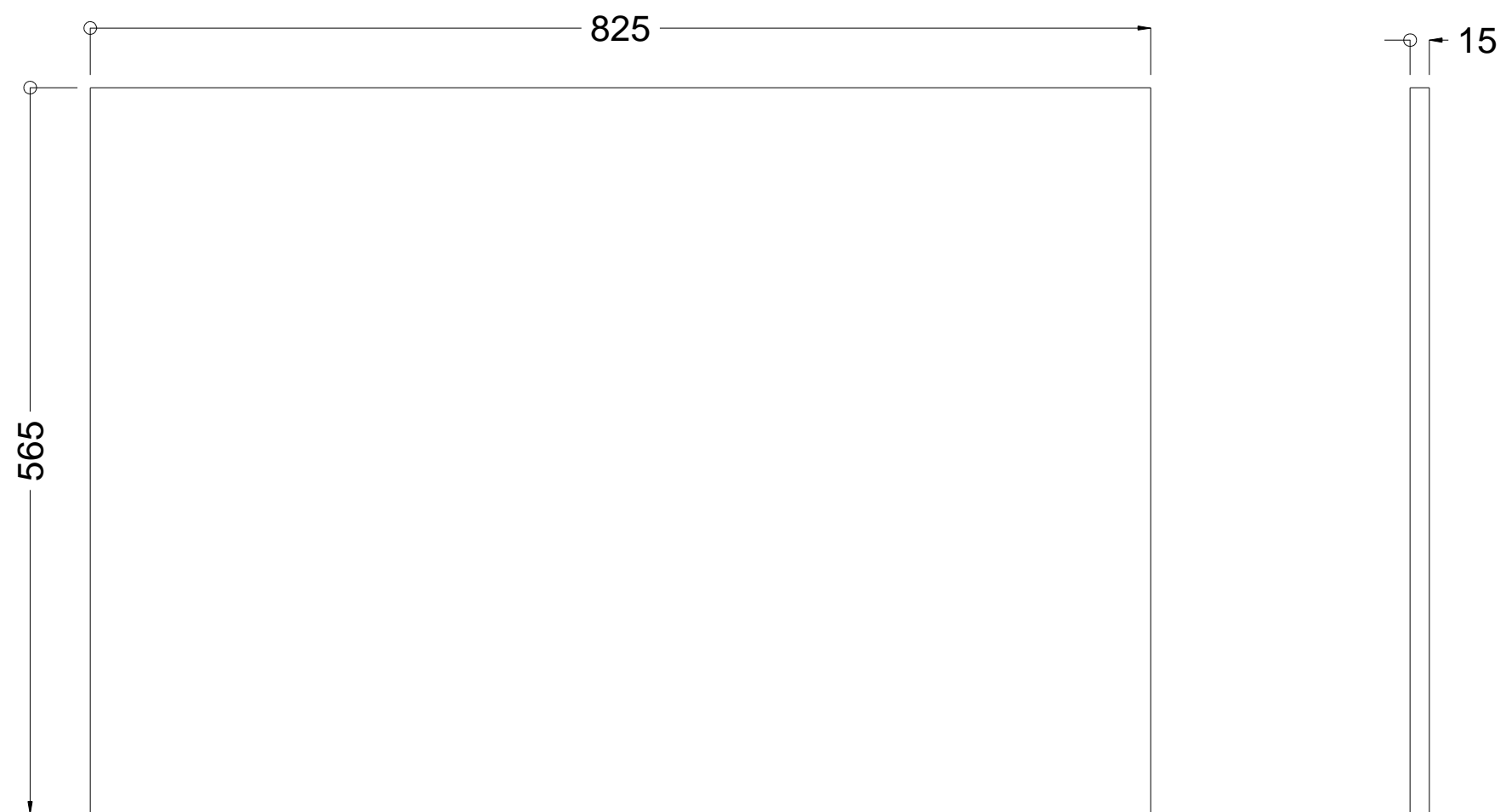


DESCRIÇÃO: MONTAGEM

MATERIAL:

USO: CAIXA 15 BATSTAKA 3K6



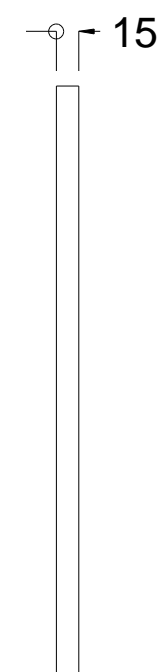
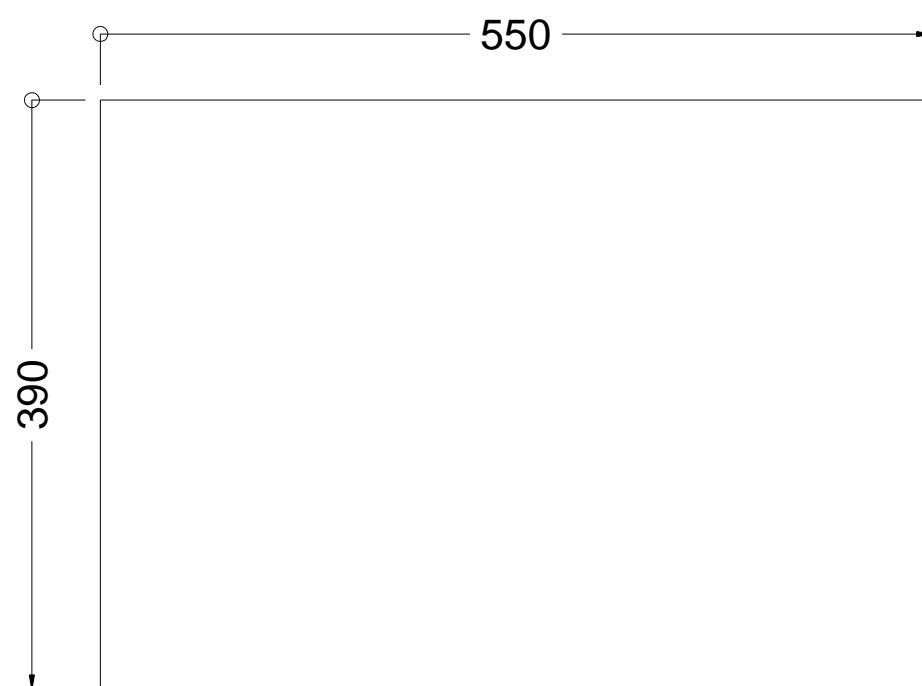


FAZER 02 PÇ.

DESCRIÇÃO: TAMPO SUPERIOR E INFERIOR

MATERIAL: MDF 15MM

USO: CAIXA 15 BATSTAKA 3K6

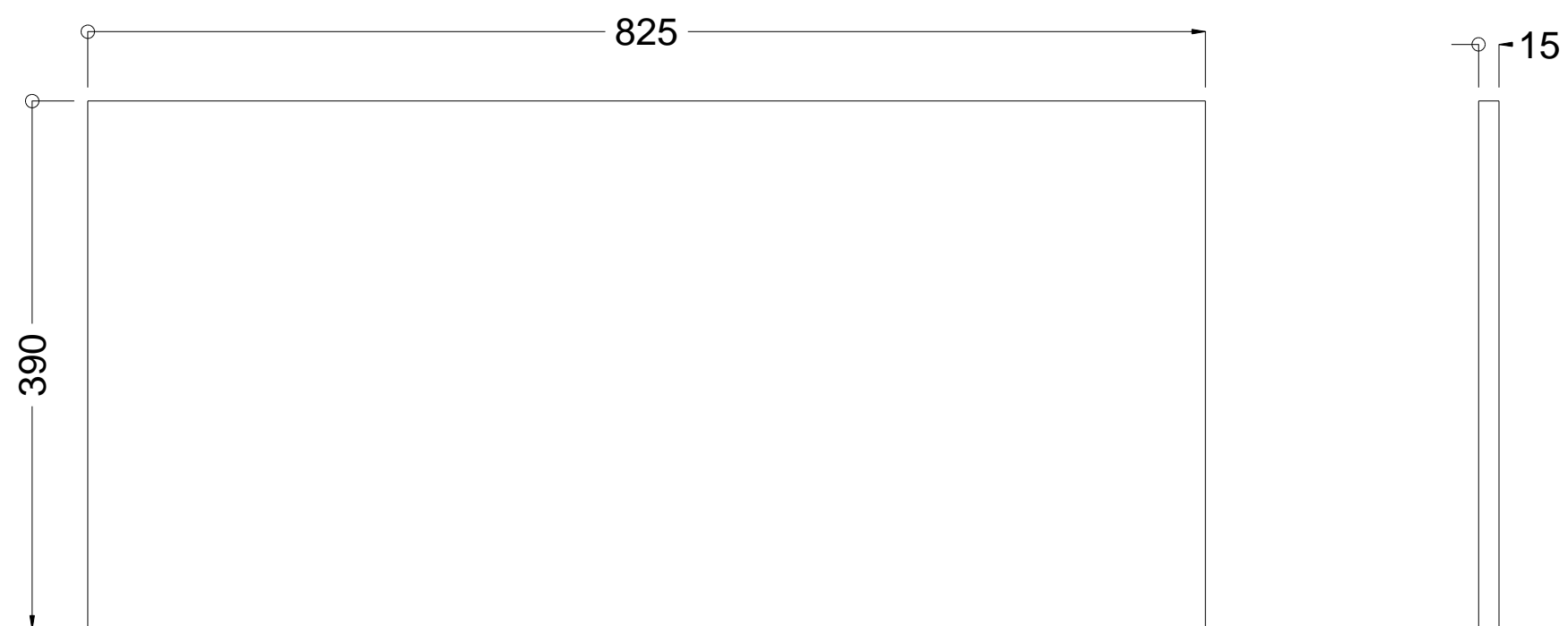


FAZER 03 PÇ.

DESCRIÇÃO: TAMPO LATERAL E DIVISÓRIA

MATERIAL: MDF 15MM

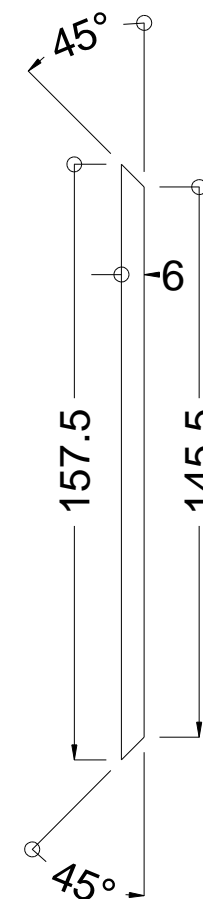
USO: CAIXA 15 BATSTAKA 3K6

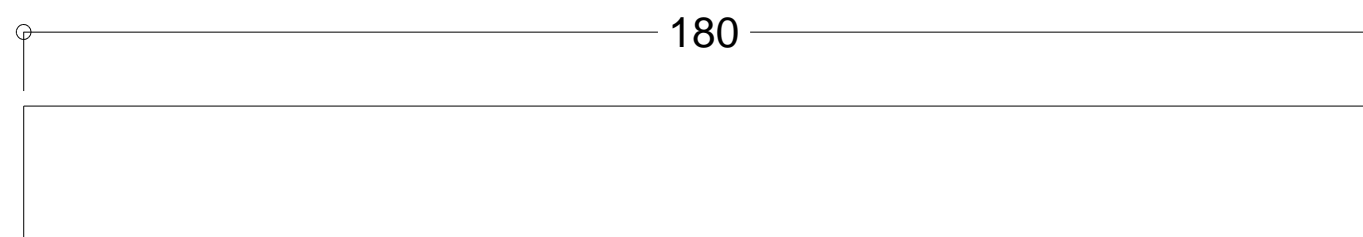
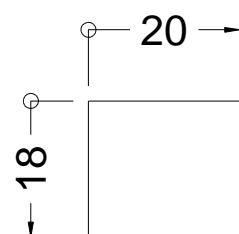


DESCRIÇÃO: TAMPO TRASEIRO

MATERIAL: MDF 15MM

USO: CAIXA 15 BATSTAKA 3K6





FAZER 08 PÇ.

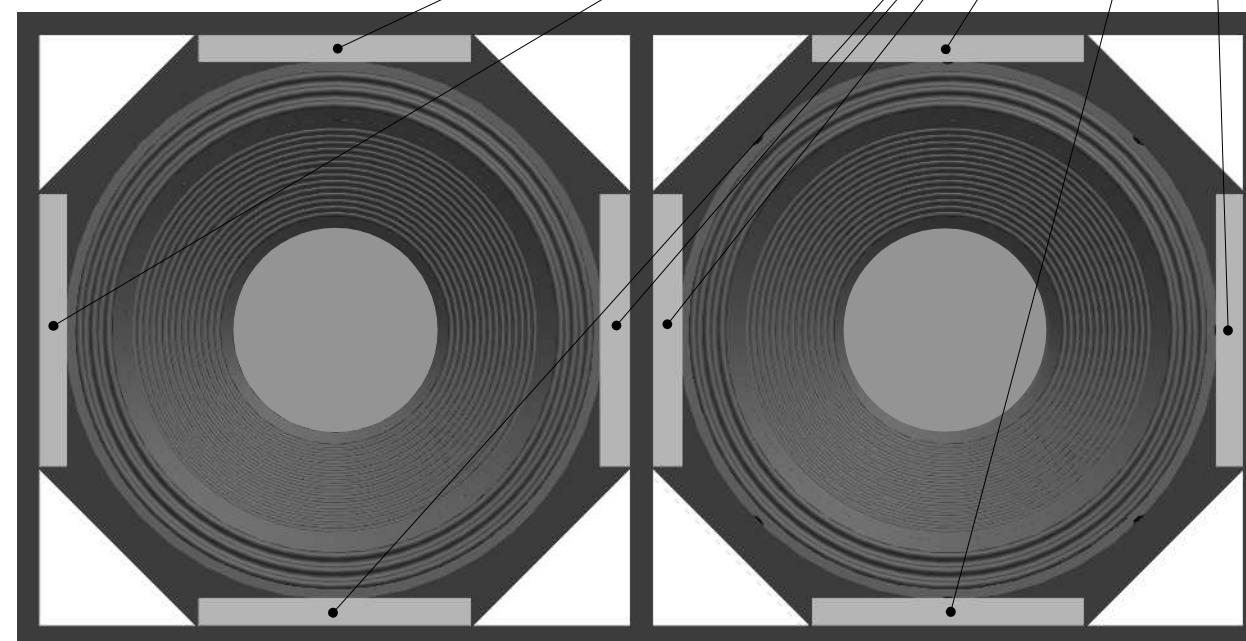
DESCRIÇÃO: CALÇO TAMPO FRONTAL

MATERIAL: MDF 18MM

USO: CAIXA 15 BATSTAKA 3K6



Calço Tampo Frontal



DESCRIÇÃO: ILUSTRAÇÃO

MATERIAL:

USO: CAIXA 15 BATSTAKA 3K6