

Box Properties

--Description--

Name: Aurum Cantus Vented Small MCCS

Type: Vented Box

Shape: Prism, square

Company: MCCS Sound

--Box Parameters--

Vb = 7.985 liters

V(total) = 8.395 liters

Fb = 42.59 Hz

QL = 7

F3 = 111.1 Hz

Fill = normal

--Vents--

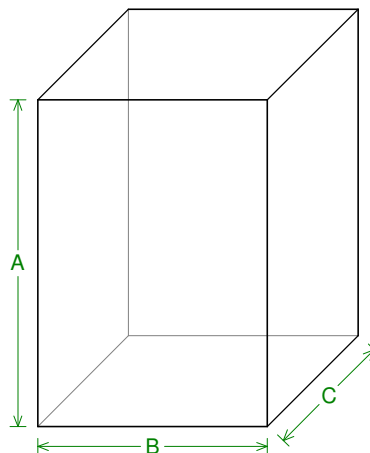
No. of Vents = 1

Vent shape = round

Vent ends = one flush

Dv = 25.4 mm

Lv = 79.89 mm



--External Dimensions--

A = 336 mm

B = 236 mm

C = 176 mm

--Internal Dimensions--

A = 300 mm

B = 200 mm

C = 140 mm

--Wall Thickness--

Front = 18 mm

Side = 18 mm

Driver Properties

--Description--

Name: AC130/50CK

Type: Standard one-way driver

Company: Aurum Cantus

Piston: Non-Woven Carbon Fiber and Kevlar

Suspension: Rubber

Dust Cap: Yes

Frame: All Alloy Frame

Voice Coil: 50mm CCAW Voice coil, Kapton voice coil bobbin

Terminals: 2 flat

Magnet: Special Magnet System of Faraday ring and demodula

--Configuration--

No. of Drivers = 1

--Driver Parameters--

Fs = 37 Hz

Qms = 3.17

Vas = 22 liters

Xmax = 6 mm

Sd = 95 sq.cm

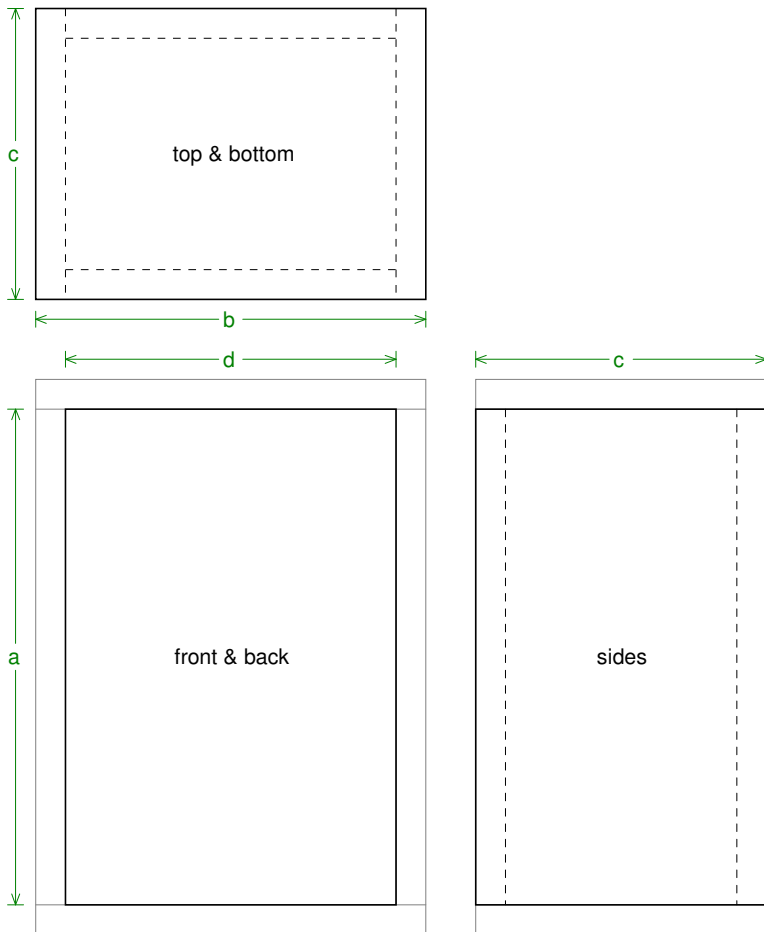
Qes = 0.23

Re = 7 ohms

Le = 0.67 mH

Z = 8 ohms

Pe = 150 watts



Box Parts

Box Shape: Square Prism

1 Top, 1 Bottom: depth (c) = 176 mm
width (b) = 236, thickness = 18 mm

1 Front, 1 Back: height (a) = 300 mm
width (d) = 200, thickness = 18 mm

2 Sides: height (a) = 300 mm
depth (c) = 176, thickness = 18 mm

--Driver Mounting--
Mounting: Flush

--Vent Parts--

1 Duct: outside diameter (e) = 31.75 mm
inside diameter (g) = 25.4 mm
length (h) = 79.89 mm

Peças para 2 Caixas:

- 4 x = 176 mm x 236 mm x 18 mm - Top / Bottom
- 4 x = 300 mm x 200 mm x 18 mm - Front / Back
- 4 x = 300 mm x 176 mm x 18 mm - Sides

Sarrafo 20mm x 20mm

Wiring Diagram

